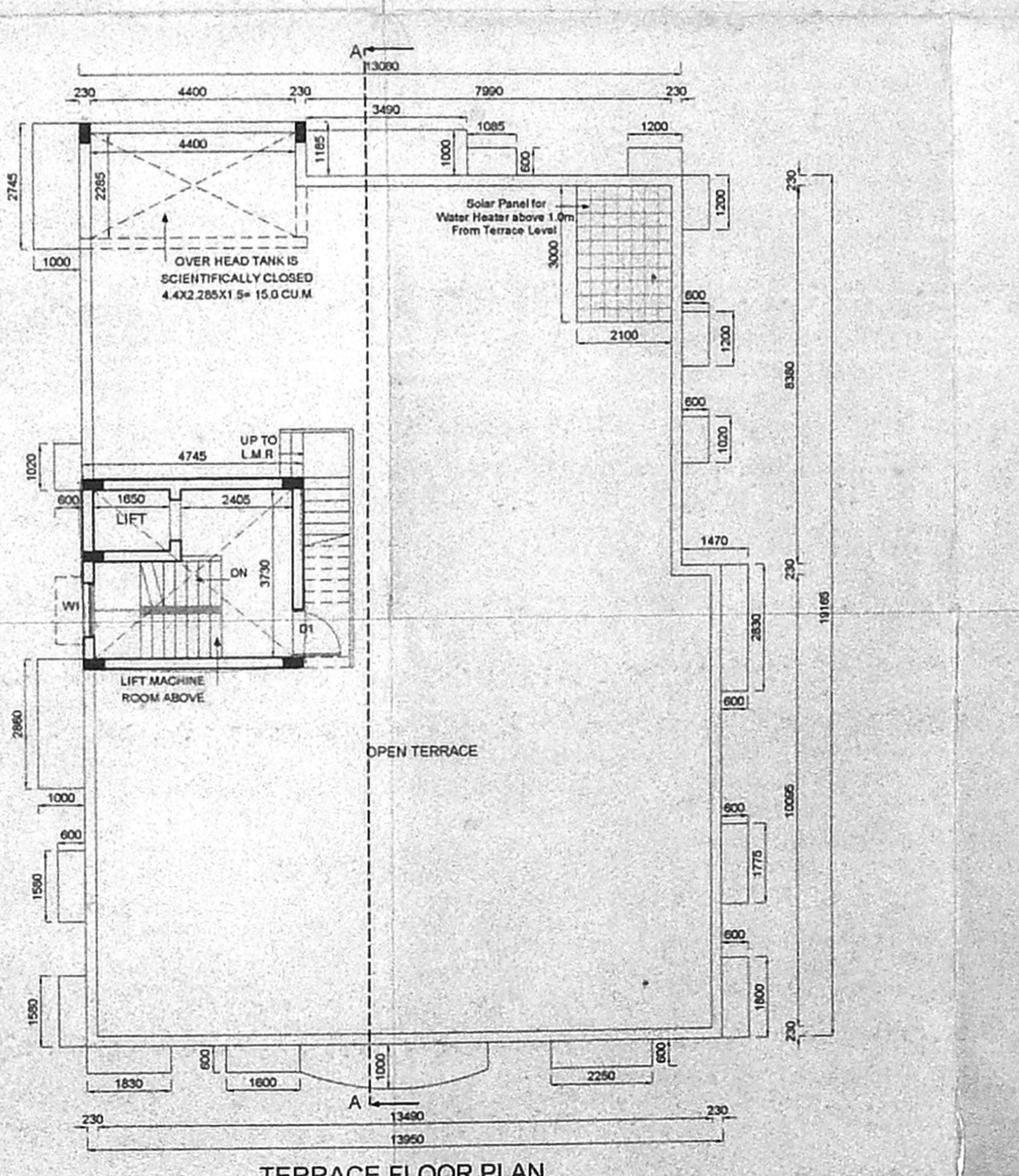
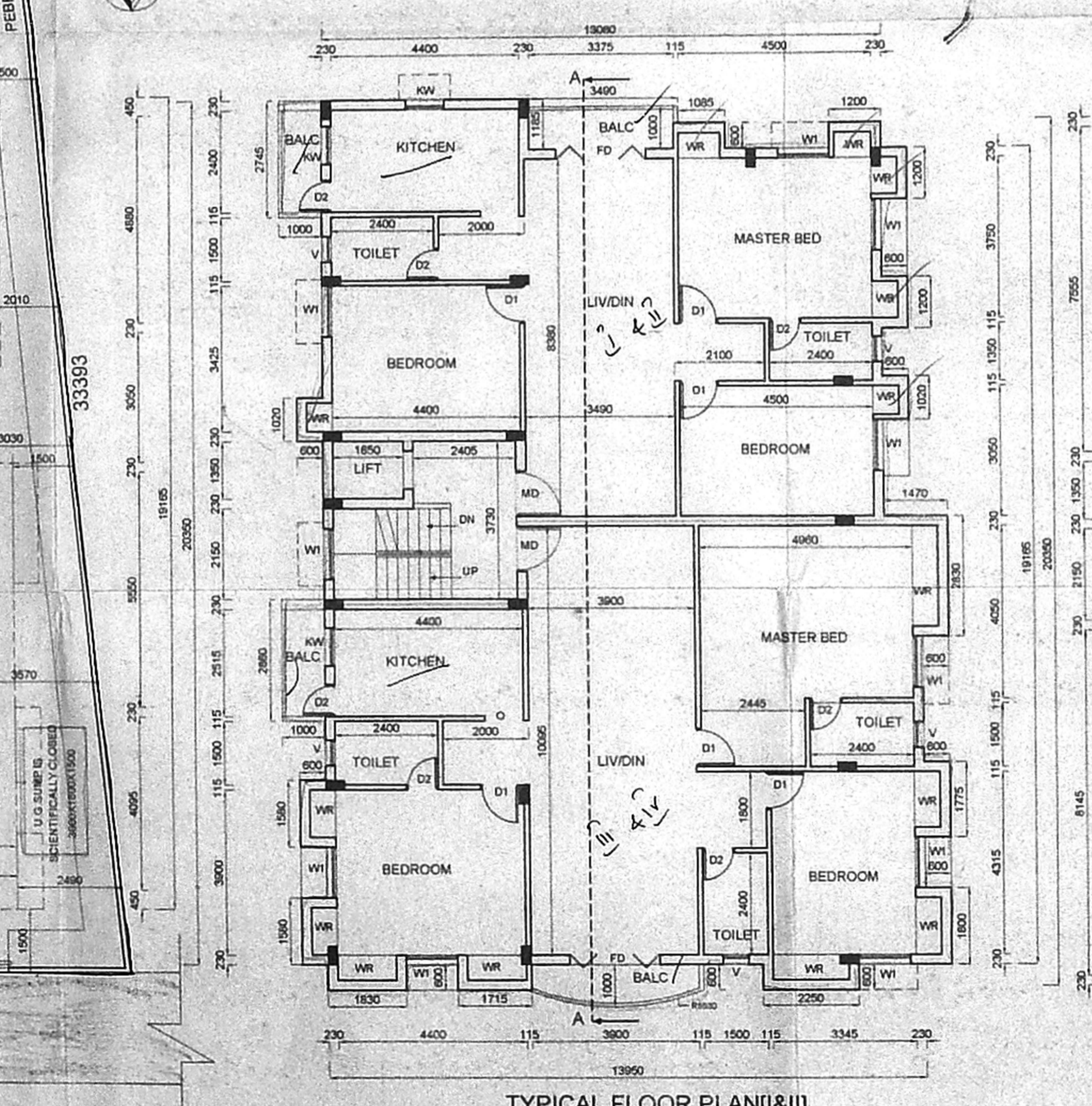
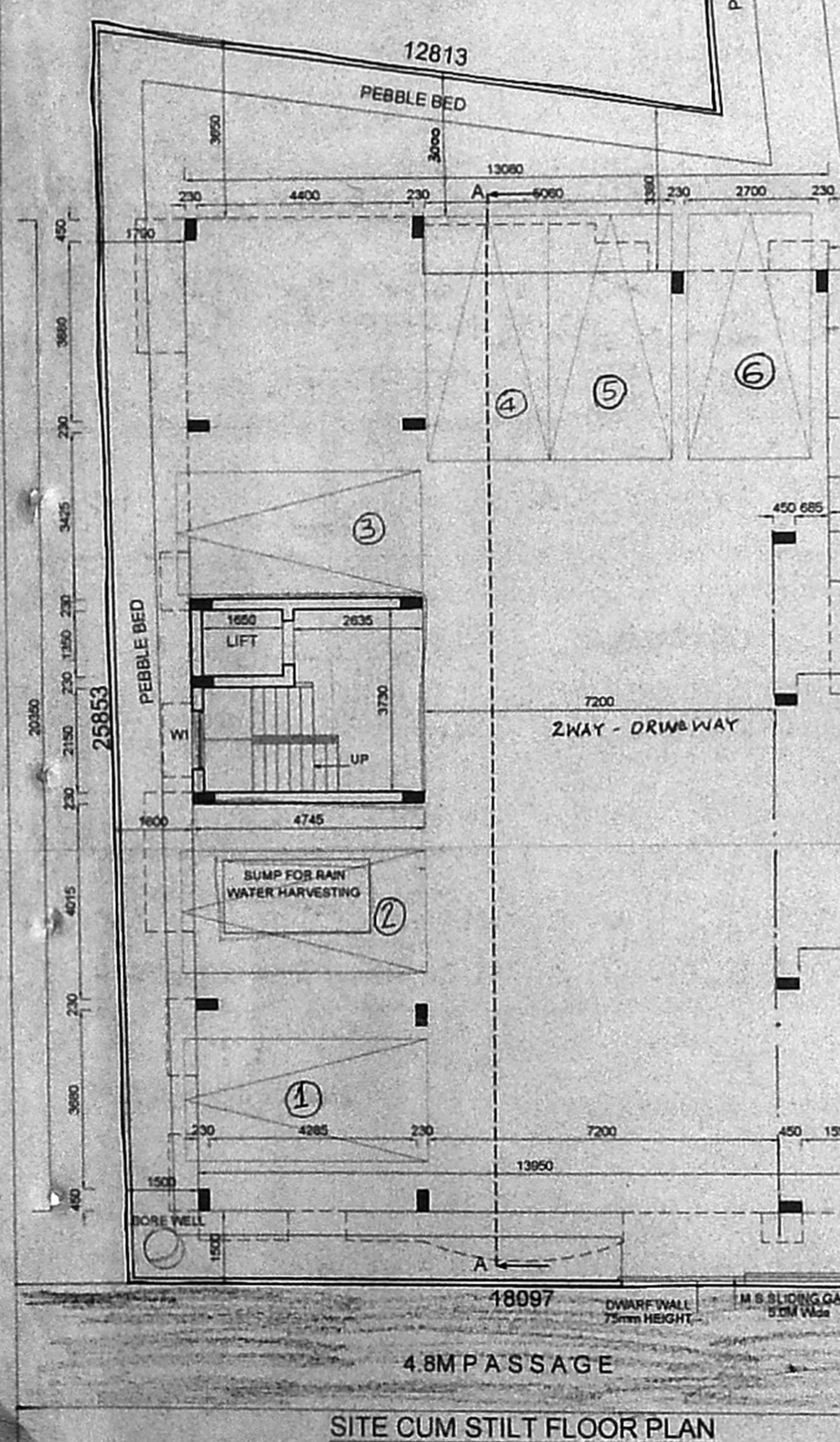
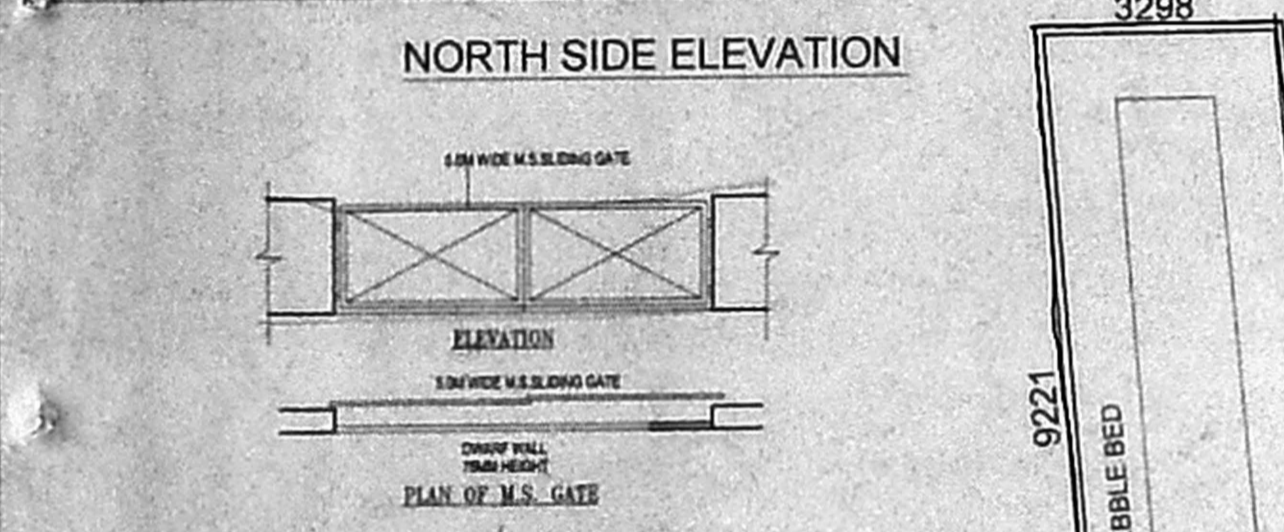
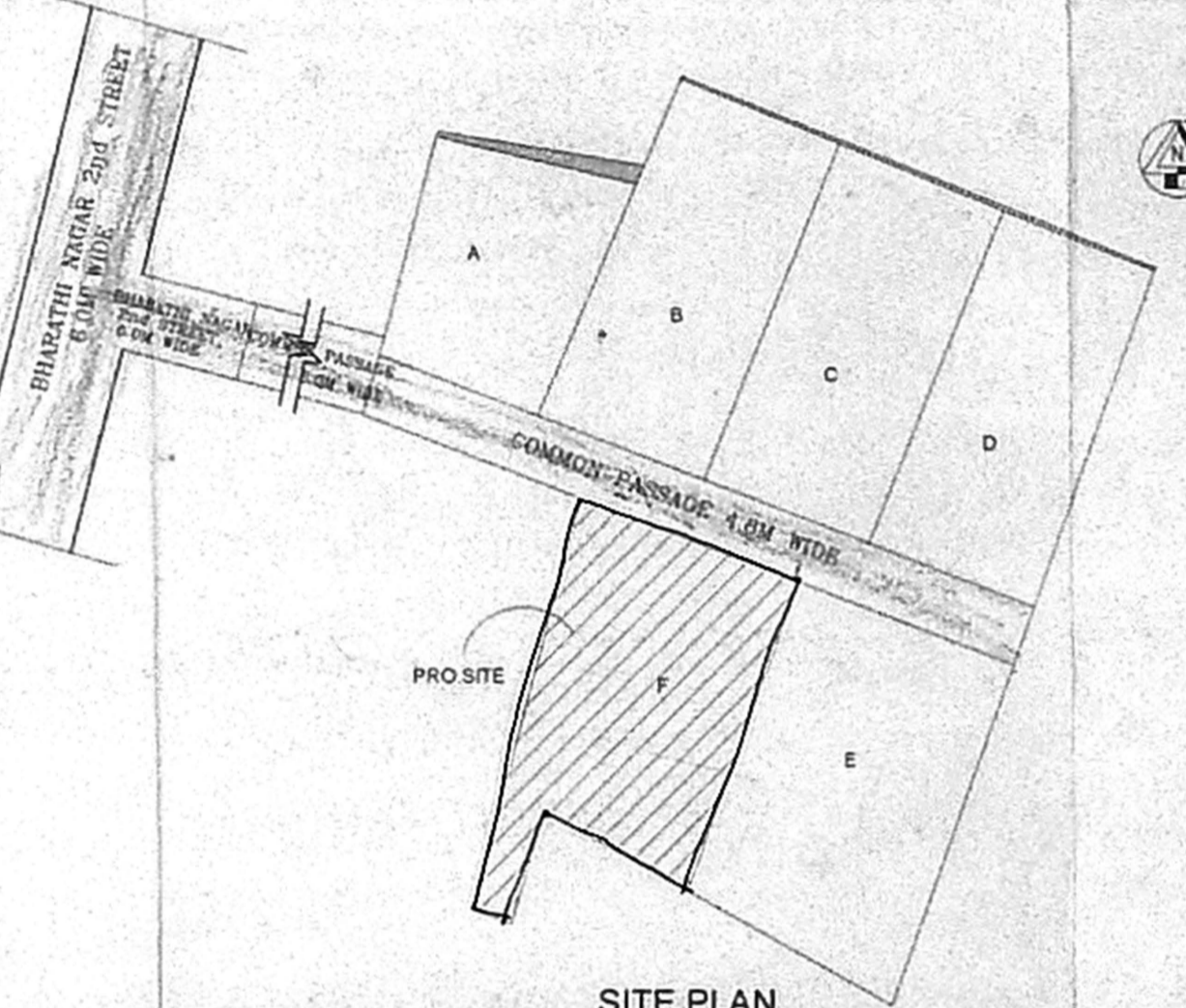
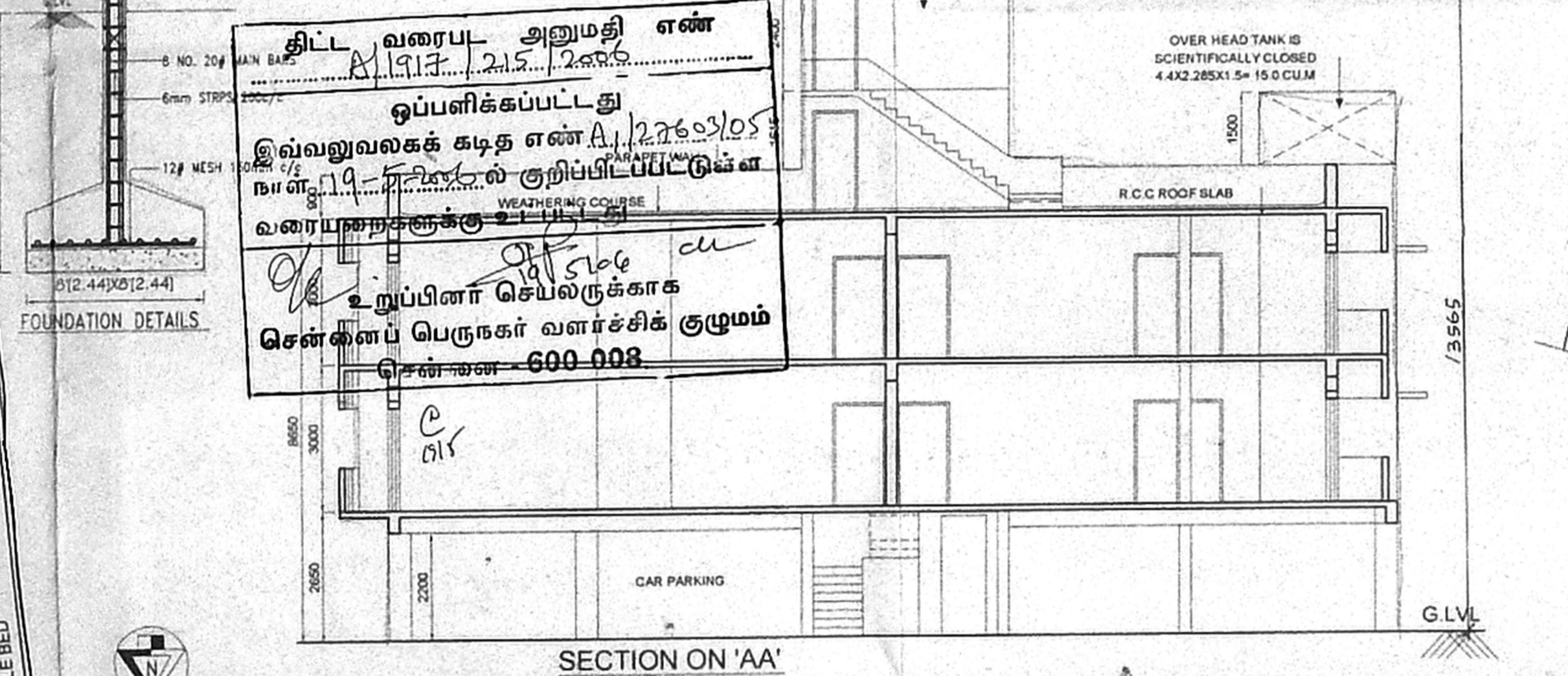


SUB DIVISION APPROVAL NO: SD/NDG-10/01380/2006
 DATED: 26.07.05

TITLE:-
 PLAN SHOWING THE PROPOSED RESIDENTIAL BUILDING AT PLOT NO.F: BHARATHI NAGAR II STREET, AVVAI NAGAR MAIN ROAD, THIRUVANNIYUR, CHENNAI-41 IN S. No. 151/3, 151/4, 151/5, 151/6, 151/7, 151/8, 151/9, 151/10, 151/11, 151/12, 151/13, 151/14, 151/15, 151/16, 151/17, 151/18, 151/19, 151/20, 151/21, 151/22, 151/23, 151/24, 151/25, 151/26, 151/27, 151/28, 151/29, 151/30, 151/31, 151/32, 151/33, 151/34, 151/35, 151/36, 151/37, 151/38, 151/39, 151/40, 151/41, 151/42, 151/43, 151/44, 151/45, 151/46, 151/47, 151/48, 151/49, 151/50, 151/51, 151/52, 151/53, 151/54, 151/55, 151/56, 151/57, 151/58, 151/59, 151/60, 151/61, 151/62, 151/63, 151/64, 151/65, 151/66, 151/67, 151/68, 151/69, 151/70, 151/71, 151/72, 151/73, 151/74, 151/75, 151/76, 151/77, 151/78, 151/79, 151/80, 151/81, 151/82, 151/83, 151/84, 151/85, 151/86, 151/87, 151/88, 151/89, 151/90, 151/91, 151/92, 151/93, 151/94, 151/95, 151/96, 151/97, 151/98, 151/99, 151/100.

PROPOSED AS ROAD AS 79X52
 2. TYPICAL LINE AS
 SEWERLINE AS

திட்ட வரைபட அனுமதி எண்
 11913/215/2005
 ஒப்பளிக்கப்பட்டது
 இவ்வலுவலகக் கழக எண் A/2663/05
 நாள் 19-11-2005ல் குறிப்பிடப்பட்டுள்ள
 வரையறைகளுக்கு உட்பட்ட
 உறுப்பினர் செயலருக்காக
 சென்னைப் பெருநகர் வளர்ச்சிக் குழுமம்
 சென்னை-600 008



SCHEDULE OF JOINERY

NO	DESCRIPTION	IN MM
MD	MAIN DOOR	1050X2100
D1	DOOR	900X2100
D2	DOOR	750X2100
FD	FRENCH DOOR	2100X2100
W1	WINDOW	1200X1200
KW	KITCHEN WINDOW	900X1200
V	VENTILATOR	600X900

AREA STATEMENT

DESCRIPTION	IN SQ.FT	IN SQ.M
PLOT EXTENT	4840.66	449.71
STILT FLOOR AREA		19.882
FIRST FLOOR AREA		291.460
SECOND FLOOR AREA		291.460
TOTAL FLOOR AREA		602.802
F.S.I		1.34
PLOT COVERAGE		64.81%
HEAD ROOM		19.882
LIFT MACHINE ROOM AREA		19.882
CAR PARKING AREA		271.578
NO OF CAR PARKING PROVIDED		6NOS

SPECIFICATION:

R.C.C 1:2:4 IN COLUMN FOUNDATION
 SAND FILLING IN COLUMN FOUNDATION AND BASEMENT
 P.C.C 1:4:8 IN FOUNDATION AND BASEMENT
 BRICK WORK IN C.M 1:6 FOR BASEMENT, SUPERSTRUCTURE AND PARAPET WALL
 R.C.C 1:2:4 IN ROOF SLAB, LINTEL AND SUNSHADE
 WEATHERING COURSE IN BRICK JELLY LIME CONCRETE MORTAR WITH 2 COURSES OF PRESSED TILES LAID TO SLOPE
 MOSAIC FLOORING
 PLASTERING IN C.M 1:3 FOR WALLS AND CEILING
 DOORS IN TEAK AND COUNTRY WOOD
 WINDOWS IN GLAZED AND ALUMINIUM FRAMES

ALL MEASUREMENTS ARE IN MM
 SCALE :1:100 DATE:02.11.05

For TIRUVENGADAM INVESTMENTS (P) LTD.
 Signature
 Power of Attorney Holder

OWNER SIGNATURE
 Signature
 M. P. RADEEP
 REGISTERED ARCHITECT
 REGN. NO: CA 62/15172
 COUNCIL OF ARCHITECTURE
 U-27, 10TH STREET
 ANNANAGAR, CHENNAI-600 049
 ARCHITECT/LICENCED SURVEYOR